

INSIDE PLATFORM HYBRID LIFTS SOLUTIONS





Based in Sarasota, FL, Harmar is a leading manufacturer of stairlifts, vertical platform lifts, and wheelchair and scooter lifts for automobiles. Inspired by those with limited physical mobility, we are driven to create mobility and accessibility products that allow people to go where they want, when they want, and how they want.

Founded in 1998, we continue our mission of innovation to increase independence and improve the quality of life for millions of people who are mobility-challenged. We constantly strive to evolve and update our product lines to accommodate our growing clientele.

Do you have a mobility device but don't know how to take it with you on your errands? Scooters, manual wheelchairs, and powerchairs can be difficult to get into your vehicle's cargo area without extra assistance.

Enjoy your independence taking your wheelchair, powerchair, or scooter along for the ride while stowing it inside your vehicle. Harmar offers a variety of mobility solutions to match up with the wide range of vehicles, scooters & wheelchairs and personal capabilities. Whether a hitch-mounted (outside), hoist (inside), or hybrid (inside platform) lift will better fit your needs, Harmar is sure to have a lift to best fit your lifestyle to help you enjoy your freedom.

THE HARMAR DIFFERENCE

We believe in supporting you on your journey. Our products are proudly designed and assembled here in the U.S. to help you and your loved ones enjoy freedom, independence, and dignity.



FIRST-RATE CUSTOMER SERVICE AND SUPPORT

We stand behind our products to ensure your safety and happiness with your lift. Harmar offers the best support in the industry with our LiftSquad service network, training and support. Our 3-year transferrable warranty provides flexibility.

SAFETY & TESTING

All of HARMAR's products are subject to intense testing including monitoring their load-bearing capacity by subjecting the product to several times its rated load and life-cycle testing at or above industry standards. We take pride in knowing that our products exceed quality expectations and are more than ready to lift your life in multiple ways.

COMPREHENSIVE DEALER & SERVICE NETWORK

Harmar has thousands of dealer locations across North America, which helps make our products available when and where you need them. To ensure you're choosing the best lift possible for your needs, our dealers provide assessment services, installation, and routine maintenance and service.

BE INDEPENDENT. BE CONFIDENT. BE INFORMED.



25.5 million Americans
age 5 years and older
have self-reported travel-
limiting disabilities.



3.6 million Americans
with travel-limiting
disabilities do not leave
their homes because
they are disabled or
housebound.



About 15% of the
world's population live
with a disability.

NEED A LIFT?

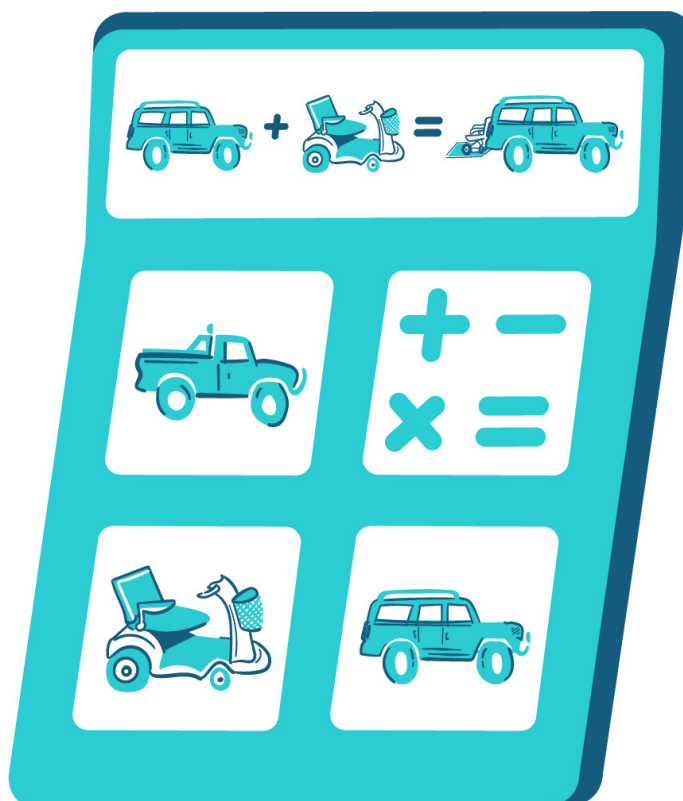
Having the freedom to bring your mobility device with you to the grocery store, beach, favorite park, or vacation is important. 25.5 million Americans 5 years and older have self-reported, travel-limiting disabilities. Traveling with a mobility device can be difficult without the right tools and can lead to many people living with a disability choosing to stay at home to avoid the hassle. With the help of a vehicle lift, you can reclaim your freedom and enjoy independent living.

WHERE WILL YOU GO FIRST?

HOW TO SELECT A VEHICLE LIFT

Harmar vehicle lifts are designed to safely and effectively transport scooters, powerchairs, or manual wheelchairs either on the outside or inside your vehicle. We offer a broad selection of vehicle lifts to ensure you will find the appropriate lift for your needs based on your vehicle, potential hitch class, mobility device, and your physical capabilities.

This brochure will help you better understand which lift or lift type would work best for you; however, we suggest you meet with your local Authorized Harmar Dealer to ensure you purchase the best lift for your needs.



LIFT/VEHICLE COMPATIBILITY

Harmar lifts can fit compact to full-size cars, SUVs, vans, and trucks. While there are countless combinations from weight capacity, to space, hitch ratings and even door shapes, Harmar has a lift for almost any vehicle and mobility device!

USER CAPABILITIES

Harmar's vehicle lifts are designed to be either fully manual, partially automatic, or fully automatic securement and lifting to ensure you feel comfortable and confident while operating your new lift.

NARROWING YOUR CHOICES CAN BE EASY

We know - there's a lot to choose from, but we have a great tool to help you narrow down your choices. Use our Compatibility Calculator online by inputting your vehicle type and year and mobility device to get started. Please also follow up with your local authorized Harmar dealer.

HYBRID LIFTS FOR YOUR VEHICLE

THE VEHICLE LIFT MARKET MIGHT SEEM OVERWHELMING - WHERE DO YOU START? FOR EASY LOADING AND INSIDE TRANSPORTATION, A HYBRID LIFT MAY BE FOR YOU.

- Mounted in the vehicle's (van or SUV) cargo area
- Moves out and down/up and in
- Mobility device is steered onto the platform on the ground, secured, then lifted into the vehicle
- Protects mobility device from harsh weather elements such as snow, ice, rain, sun, and debris on the road when traveling
- An inside platform maintains full use of vehicle's backup camera



USER CAPABILITIES MUST INCLUDE:

- Walking from the front to the rear of the vehicle and back again
- Standing for a few minutes while the lift operates
- Guide the mobility device on/off the platform
- Fold down the seat back of the mobility device or scooter tiller until it is in a compact position
- Apply pressure to hold down a button on the handheld control while the lift operates
- Tie-Down Straps: Connect the hook to location on mobility device and pull strap end to increase tension (self-retracting strap upgrades are available)

ADVANTAGES OF HYBRID VEHICLE LIFTS

Interior Storage



Easy Drive-On, Drive-Off



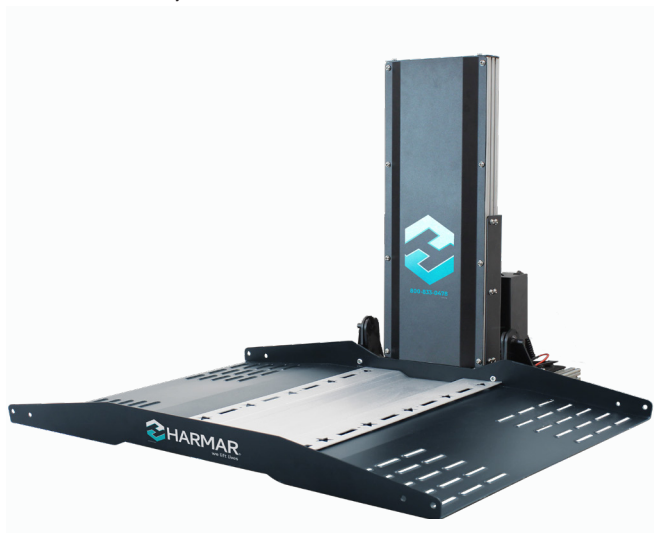
Heavy-Duty Lifting Capacity



The AL6000HD was the perfect solution. Keeping my powerchair protected from the elements during transport was very important to us. And the hold-down arm makes it easy for us to use!

INSIDE PLATFORM HYBRID LIFTS FOR MINIVANS, SUVs, AND VANS

Depending on the Harmar hybrid lift, you can either side-load your mobility device into the second row of your vehicle or lift it into the rear cargo area to maintain your second-row seating. These lift choices are optimal for safe mobility device storage and inconspicuous travel when on the road. Each Harmar hybrid is fully powered, so you can stand back and watch it do all the heavy lifting for you! With a 3-year transferrable warranty, these three lifts pair well with many SUVs, vans, and minivans.



AL6000

The AL6000 is a more straightforward solution to its HD upgrade to help you travel with your scooter or powerchair inside your vehicle's cargo area. Keep it simple, or choose from an assortment of options to make this lift yours! This remote control operated hybrid powerhouse features sliding aluminum rails for smooth performance and increased load capacity.

Lifting Capacity: 350 lb

Install Weight: 160 lb

Platform Size: - 28.5" x 38"

Securement: - 4 cam buckle straps

Included Accessory: - Remote

Required Depth: - 44"

Required Height: - 30.25"

Vertical Reach: - 35.5"

Available Options:

- 4 self-tensioning Q'Straint retractors
- Battery pack
- Custom adapters
- Hold-down arm
- Puddle Lights
- Scooter wheel cradle
- Wireless key fob



AL6000HD

The AL6000HD is optimal for transporting your mobility device in your vehicle's cargo area. The HD version of Harmar's newest hybrid lift offers many luxurious accessories to help you travel with your mobility device with comfort while protecting it from the harsh winter elements and potential debris from the roads. Enjoy easy evening loading and unloading with the included puddle lights and automatic hold-down arm.

Lifting Capacity: 400 lb

Install Weight: 175 lb

Platform Size: - 28.5" x 38"

Securement: - Hold-down arm

Included Accessories: - Puddle lights
- Remote

Required Depth: - 44"

Required Height: - 30.25"

Vertical Reach: - 35.5"

Available Options:

- 4 cam buckle straps
- 4 self-tensioning Q'Straint retractors
- Battery pack
- Custom adapters
- Scooter wheel cradle
- Wireless key fob



AL690

Loading your mobility device through the side of your vehicle has never been so easy! The AL690 is convenient for drive-on/drive-off side loading by securely lifting and transporting powerchairs and scooters into vans and minivans. Don't want to modify your vehicle to accommodate your lift? Most AL690 applications are completed without any drilling required and can spare third-row seating.

Lifting Capacity: 275 lb

Install Weight: 186 lb

| | |
|---------------------------|--|
| Platform Size: | - 21.5" to 29" adjustable width platform length 40" |
| Securement: | - 4 cam buckle straps |
| Required Depth: | - 55" |
| Required Height: | - 32" |
| Vertical Reach: | - 35" |
| Available Options: | - Battery pack - Custom adapters - Self-tensioning straps - Wireless remote |

WARRANTY



Harmar's 3-Year Transferable Warranty is flexible for whatever life brings your way. Should you need to switch the lift to another vehicle or sell it to another user – the warranty lasts 3 years from the date of installation. The warranty covers the cost of parts.

HYBRID LIFT PENDANT REMOTES

Hybrid lifts do almost all the hard work when it comes to unloading and loading your mobility device, so you don't have to! Harmar has designed remotes to help make using your lift virtually effortless. These pendants' features now include:



VEHICLE LIFT SECUREMENT SYSTEMS



AUTOMATIC HOLD-DOWN ARM

Pull T-handle and swing arm into position with one hand; reverse process for unloading.



Q'STRAIT RETRACTORS

Pull strap end to connect hook to the mobility device. Twist knob to increase tension and tighten straps.



TIE-DOWN STRAPS

Pull strap end to connect the hook to the mobility device. Pull strap end to increase tension.



Harmar
1500 Independence Blvd., Suite 220
Sarasota, FL 34234
800-833-0478
www.harmar.com

