

*Viva*LIFT!®  
POWER RECLINER COLLECTION



“

AN INCREDIBLE CHAIR!  
I CAN FULLY RECLINE  
AND IT IS SO RELAXING. IT REALLY IS  
THE MOST COMFORTABLE  
RECLINER IN THE WORLD!

– GEORGE R.



**SCOTT MEUSER**  
**CHAIRMAN & CEO**  
PRIDE MOBILITY®

With over three decades in the power lift recliner industry, we know that our business is about you, our customer. We're humbled when you choose to bring one of our power lift recliners into your home, knowing that it must fit your lifestyle and decor.





VivaLift!® Is the culmination of your direct feedback. You wished for luxurious comfort, exceptional quality, state-of-the-art features, and elegant designs. Over a two-year period, we listened and refined, then listened some more. The result is the VivaLift!® line of power lift recliners designed for you, your home and your lifestyle.

We understand that bringing a power lift recliner into your home isn't just a purchase, but an investment – toward your comfort, home décor, and lifestyle. We deeply value that you, our customer, have enabled us to meet those vital goals through VivaLift!®.

A handwritten signature in black ink, reading "Scott Meuser". The signature is fluid and cursive, with a long horizontal line extending from the end.



## INDEPENDENT FUNCTIONS

-  1. The power headrest lifts your head, neck and shoulders for maximum support.
-  2. The upward lift offers convenient stand assist for getting in and out of the recliner.
-  3. The power lumbar enables you to personalize your comfort.
-  4. The footrest extension allows you to relax and stretch out completely.





## FOOTREST EXTENSION

4.

## USB REMOTE

7.

## BACKREST

5.



5. The backrest moves up and down independently to help you find the perfect position.



6. Infinite position recline enables the backrest and footrest to move independently from one another so that a variety of positions can be reached.



# THE MOST COMFORTABLE RECLINER IN THE WORLD!

## STANDARD FEATURES



7. The USB remote adjusts all functions independently and allows you to charge your smart device.



8. Lithium battery backup ensures your recliner is operational when the power goes out.

## INFINITE POSITION

6.



# ULTRA<sup>1</sup>

FDA Class II Medical Device<sup>1</sup>





It's the recliner that can do it all! When you need to soothe away the stress of your day, the Ultra Collection by VivaLift!® Power Recliners is there for you. The Ultra Recliner features VivaLift! Tilt, which puts the lift chair into a recline position where one's knees are elevated above your heart, providing the feeling of weightlessness.

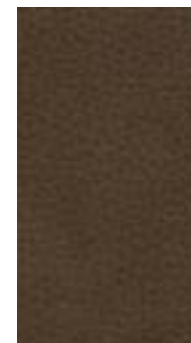
The Ultra has three different heating pads in the shoulders, lumbar and seat. Plus, the air bladder massage system applies gentle pressure to your lower back, with three intensity settings to massage your aches away.

With an easy-to-use toggle remote, you can adjust your comfort levels at the touch of a button. The Ultra Recliner also features lithium battery backup, a hideaway wireless charging station and a hideaway cup holder.

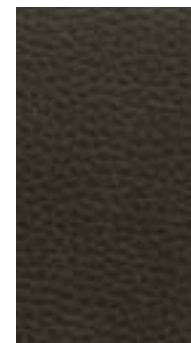
#### STANDARD FABRIC: CAPRICCIO



SLATE



CAPPUCCINO



SMOKE



DOVE







# RADIANCE<sup>1,2,4</sup>

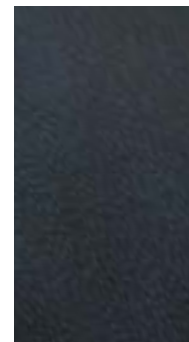
FDA Class II Medical Device<sup>1</sup>



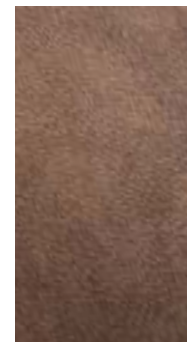


Whether you cozy up with a beverage and your favorite book or kick back for a relaxing evening of television, this power recliner is right for you! Experience the warmth of the Radiance Collection from VivaLift!® Power Recliners. With three different heating pads in the shoulders, lumbar and seat, you can adjust your heat level accordingly and soothe your tired muscles. Keep your smart phone close at hand while you charge it with the wireless charging station. And if the power goes out, know you have peace of mind with the lithium battery backup.

STANDARD FABRIC: CANYON



OCEAN



SILT



STEEL



WALNUT





# ATLAS PLUS<sup>1, 2</sup>

FDA Class II Medical Device<sup>1</sup>





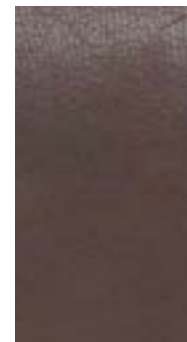
When you need a cozy and comfortable place to gather with your family, the Atlas Plus collection\* is there for you. Customize your comfort while you and your family watch your favorite television show together or play a rousing game of cards. Enjoy a refreshing beverage and keep it close with the stow-away cup holder, and conveniently charge your phone with the hide-away smart phone charging station. It's the perfect time to unplug and unwind!

With lithium battery backup for your peace of mind, the Atlas Plus Power Recliner is the perfect addition to any home. Choose from three exquisite fabrics and savor the beautiful contrast stitching, all which compliment your decor perfectly. Cherish these wonderful, rare moments with your loved ones and embrace the luxury and coziness of the Atlas Plus.

#### STANDARD FABRIC: BADLANDS



MUSHROOM



WALNUT



STEEL







# ATLAS<sup>1</sup>

FDA Class II Medical Device<sup>1</sup>

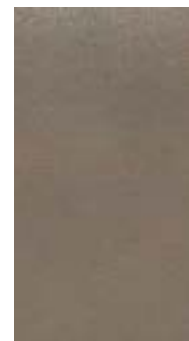




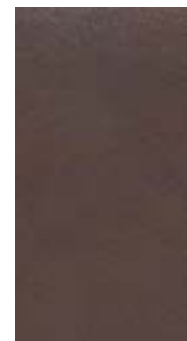
When it comes to family, nothing is more important. And every family needs a cozy, comfortable place where they can gather and make memories. The Atlas collection by VivaLift!® brings families together, delivering comfort and relaxation that is fully customizable to meet the needs of every member of your household.

The Atlas recliner has a convenient remote with soft-touch buttons, each with an independent function. At the press of a button, experience full support from the power headrest as you share a joke or tell a story. Toast to your children and enjoy a beverage with the accessible cup holder. The Atlas collection offers an array of elegant fabrics with contrast stitching to complement any living room or family room. It's time to cherish every moment in comfort with Atlas recliner from VivaLift!®.

## STANDARD FABRIC: BADLANDS



MUSHROOM



WALNUT



STEEL







# TRANQUIL 2<sup>1</sup>

FDA Class II Medical Device<sup>1</sup>

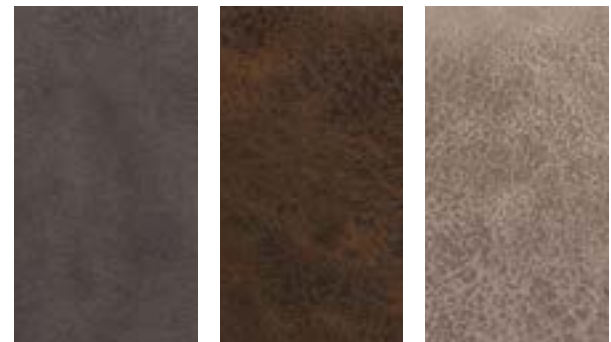




There is no greater joy than reading a good book in a comfortable, cozy recliner. The Tranquil 2 collection by VivaLift!® Power Recliners combines quiet comfort with gorgeous fabrics, for a rich and upscale look. Get the support you need for your neck, shoulders and lower back as you dive into your favorite story. With every page turn, stretch your feet out comfortably on the footrest extension. At the touch of a button, soothe your body with the power lumbar and enjoy complete comfort and relaxation.

The Tranquil 2 collection exudes class and style with exquisite contrast stitching. It's the perfect addition to your living room, office or study. When you are ready to rest your eyes, customize your comfort with infinite, lay-flat positioning. Settle back and enjoy the peace and tranquility that can only be found in a VivaLift!®.

#### STANDARD FABRIC: ASTRO



GREY

BROWN

MUSHROOM



# ELEGANCE<sup>1</sup>

FDA Class II Medical Device<sup>1</sup>



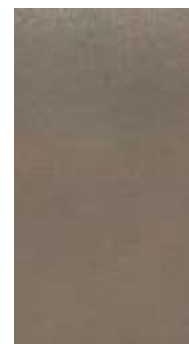




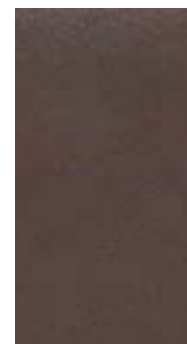
A truly elegant, sophisticated recliner is more than just physically alluring: It's the precise combination of function, style and comfort. The Elegance collection from VivaLift!® Power Recliners is all of these and more, providing a cozy place to relax with your family.

The soft fabric and contrast stitching makes this recliner the perfect addition in your home. The remote offers soft-touch buttons, each with an independent function. Find your most comfortable position at the touch of a button while sharing a moment with your loved ones. The remote also features a USB charging port, so you can keep your tablet or cell phone fully charged and ready for use. Experience the sophistication and class of the Elegance collection from VivaLift!®.

#### STANDARD FABRIC: BADLANDS



MUSHROOM



WALNUT



STEEL







# ESCAPE<sup>1</sup>

FDA Class II Medical Device<sup>1</sup>







As the sun rises, begin your morning with a hot mug of coffee and experience the snug, cozy feeling that is found in the Escape collection by VivaLift!® Power Recliners. Inhale the steaming, rich aroma from your cup as you adjust your position using the convenient remote. With true-infinite positioning, the possibilities are endless! Each soft-touch button controls an independent function, allowing you to raise the power headrest after finding the most supportive position on the footrest extension.

Sink deep into your Escape recliner and feel the comfort of Burbank or Ultraleather® fabrics, with colors that blend perfectly with the style and décor of your home. Your day has begun, but why rush out the door? Take time for you and enjoy the morning with the Escape collection from VivaLift!® Power Recliners.

#### STANDARD FABRIC: BURBANK



PEWTER



JAVA



TAUPE



NAVY

#### OPTIONAL FABRIC: ULTRALEATHER®



BUFF



FUDGE



# LEGACY<sup>1</sup>

FDA Class II Medical Device<sup>1</sup>







Embrace the serenity of a quiet corner in your home with a cozy, luxurious recliner. Take time for yourself with the Legacy collection from Vivalift!®. Put your feet up and fully stretch out on the footrest extension. Enjoy a good novel or turn on the television. No matter

what activity you choose, infinite, lay-flat positioning ensures you'll always find your most comfortable and supportive position. Never misplace your book or the remote with the convenient side storage pocket.

When your tea mug is empty and it's hard to get yourself out of the chair, the durable lift mechanism raises the recliner to a standing position. With a button-back design and soft fabrics, the Legacy collection by Vivalift!® Power Recliners is everything you could want in a recliner.

#### STANDARD FABRIC: SAVILLE



WINE



GREY



BROWN





# METRO<sup>1</sup>

FDA Class II Medical Device<sup>1</sup>







Contemporary comfort has never been more stylish! The Metro collection by VivaLift!® Power Recliners offers maximum relaxation with infinite, lay-flat positioning. Soft, dark colors with Saville fabric offers a unique and cozy appeal, making the Metro recliner a perfect accent piece for the bright areas in your home. A USB port in the remote offers convenient access for charging smart devices. It's time to experience the richness and luxury of the VivaLift!® brand. Make the Metro collection a part of your home.

STANDARD FABRIC: SAVILLE



GREY



BROWN





# URBANA<sup>1</sup>

FDA Class II Medical Device<sup>1</sup>







Innovative technology meets contemporary style for a recliner that supports you and your busy life. The Urbana collection by VivaLift!® Power Recliners is the perfect addition to your townhouse or condo. After a long day, experience the comfort of power lumbar, which can be adjusted at the touch of a button. The Urbana lets you fully recline with infinite, lay-flat positioning and experience maximum relaxation. The recliner's modern and chic Stonewash fabrics are soft to the touch. Comfort never looked better with the Urbana collection.

STANDARD FABRIC: STONEWASH



GRANITE



GUNMETAL



| COLLECTION            | ULTRA <sup>1</sup> | ULTRA <sup>1</sup> | ULTRA <sup>1</sup> | RADIANCE <sup>1,2,4</sup> | RADIANCE <sup>1,2,4</sup> | RADIANCE <sup>1,2,4</sup> | RADIANCE <sup>1,2,4</sup> | ATLAS PLUS <sup>1,4</sup>                           | ATLAS <sup>1</sup>                                      | TRANQUIL 2 <sup>1</sup> |
|-----------------------|--------------------|--------------------|--------------------|---------------------------|---------------------------|---------------------------|---------------------------|---|---|-------------------------|
| MODEL                 | PLR-4955S          | PLR-4955M          | PLR-4955L          | PLR-3955PW                | PLR-3955S                 | PLR-3955M                 | PLR-3955LT                | PLR-2985M   | PLR-985M  | PLR-935PW               |
| POSITION <sup>4</sup> | True-Infinite      | True-Infinite      | True-Infinite      | True-Infinite             | True-Infinite             | True-Infinite             | True-Infinite             | True-Infinite<br>Relaxed<br>Reclined<br>Upward Lift | Infinite Lay Flat<br>Relaxed<br>Reclined<br>Upward Lift | True-Infinite           |
| HEIGHT RANGE          | 5'4" and below     | 5'5" - 6'          | 6' and above       | 5'4" and below            | 5'4" and below            | 5'4" - 6'                 | 6' and above              | 5'4" - 5'9"   | 5'4" - 5'9"   | 5'3" and below          |
| SIZE                  | Small              | Medium             | Large              | Petite Wide               | Small                     | Medium                    | Large/Tall                | Medium  | Medium  | Petite Wide             |
| WEIGHT CAPACITY       | 400 lbs.           | 400 lbs.           | 400 lbs.           | 400 lbs.                  | 400 lbs.                  | 400 lbs.                  | 400 lbs.                  | 400 lbs.  | 400 lbs   | 400 lbs                 |
| SEAT-TO-FLOOR         | 18"                | 19.5"              | 21.5"              | 19.5"                     | 18"                       | 19.5"                     | 21.5"                     | 19.5"   | 19.5"   | 18"                     |
| SEAT DEPTH            | 18"                | 21"                | 22"                | 18"                       | 18"                       | 21"                       | 22"                       | 21"   | 21"   | 18.5"                   |
| SEAT WIDTH            | 20"                | 22.5"              | 23"                | 24"                       | 20"                       | 22.5"                     | 23.5"                     | 22"   | 22"   | 24"                     |
| TOP OF BACK TO SEAT   | 25"                | 28"                | 30"                | 23"                       | 25"                       | 28"                       | 31"                       | 26"   | 26"   | 24.5"                   |
| FULLY PADDED CHAISE   | Yes                | Yes                | Yes                | Yes                       | Yes                       | Yes                       | Yes                       | Yes   | Yes   | Yes                     |
| FOOTREST EXTENSION    | Standard           | Standard           | Standard           | Standard                  | Standard                  | Standard                  | Standard                  | Standard  | Standard  | Standard                |
| HEAT                  | Standard           | Standard           | Standard           | Standard                  | Standard                  | Standard                  | Standard                  | NA  | NA  | NA                      |
| MASSAGE               | Standard           | Standard           | Standard           | NA                        | NA                        | NA                        | NA                        | NA  | NA  | NA                      |
| SEATING TYPE          | Total Comfort      | Total Comfort      | Total Comfort      | Total Comfort             | Total Comfort             | Total Comfort             | Total Comfort             | Total Comfort                                       | Total Comfort   | Total Comfort           |
| CHAIR HEIGHT          | 41"                | 43"                | 47"                | 40"                       | 41"                       | 43"                       | 49"                       | 42"   | 42"   | 38"                     |
| DISTANCE FROM WALL    | 15"                | 15"                | 21.5"              | 14"                       | 15"                       | 15"                       | 21.5"                     | 16"   | 16"   | 12.5"                   |
| OVERALL WIDTH         | 37"                | 39"                | 39"                | 41"                       | 37"                       | 39"                       | 40"                       | 39"   | 39"   | 36"                     |
| CHAIR WEIGHT          | 158 lbs.           | 158 lbs.           | 176 lbs.           | 161 lbs.                  | 156 lbs.                  | 158 lbs.                  | 178 lbs.                  | 164 lbs.  | 161 lbs.  | 143 lbs.                |
| WARRANTY              | 7-Yr. Pro-rated    | 7-Yr. Pro-rated    | 7-Yr. Pro-rated    | 7-Yr. Pro-rated           | 7-Yr. Pro-rated           | 7-Yr. Pro-rated           | 7-Yr. Pro-rated           | 7-Yr. Pro-rated                                     | 7-Yr. Pro-rated   | 7-Yr. Pro-rated         |

\*Not all units achieve all positions. Please refer to specific product.

Note: Measurements may vary +/- 1". Specifications subject to change without prior notice. The information contained herein is correct at the time of publication; we reserve the right to alter specifications without prior notice.

Recommended HCPCS: E0627-Seat lift mechanism, electric, any type. DME providers are responsible for determining the appropriate billing codes when submitting for insurance reimbursement. HCPCS codes provided should not be considered as legal advice and do not guarantee reimbursement. Payer coding, coverage and bundling guidelines may apply.



| TRANQUIL 2¹     | TRANQUIL 2¹     | TRANQUIL 2¹     | ELEGANCE¹   | ELEGANCE¹   | ESCAPE¹                       | ESCAPE¹                       | LEGACY¹   | LEGACY¹   | METRO¹  | URBANA¹   |
|-----------------|-----------------|-----------------|---|---|-------------------------------|-------------------------------|---|---|---|---|
| PLR-935S        | PLR-935M        | PLR-935LT       | PLR-975M  | PLR-975L  | PLR-990iM                     | PLR-990iL                     | PLR-958M  | PLR-958L  | PLR-925M  | PLR-965M  |
| True-Infinite   | True-Infinite   | True-Infinite   | Infinite Lay Flat<br>Relaxed<br>Reclined<br>Upward Lift | Infinite Lay Flat<br>Relaxed<br>Reclined<br>Upward Lift | True-Infinite<br>Zero Gravity | True-Infinite<br>Zero Gravity | Infinite Lay Flat<br>Relaxed<br>Reclined<br>Upward Lift | Infinite Lay Flat<br>Relaxed<br>Reclined<br>Upward Lift | Infinite Lay Flat<br>Relaxed<br>Reclined<br>Upward Lift | Infinite Lay Flat<br>Relaxed<br>Reclined<br>Upward Lift |
| 5'3" and below  | 5'4" - 5'9"     | 5'10" and above | 5'4"-5'9"   | 5'10" and above   | 5'4"-5'9"                     | 5'10" and above               | 5'4"-5'9"   | 5'10" and above   | 5'3" and below  | 5'10" and above   |
| Small           | Medium          | Large/Tall      | Medium  | Large   | Medium                        | Large                         | Medium  | Large   | Medium  | Medium  |
| 400 lbs         | 400 lbs         | 400 lbs         | 400 lbs   | 400 lbs   | 400 lbs                       | 400 lbs                       | 400 lbs   | 400 lbs   | 400 lbs   | 400 lbs   |
| 18"             | 19.5"           | 21.5"           | 20"   | 20.5"   | 20"                           | 20"                           | 19.5"   | 20.5"   | 19"   | 20"   |
| 18.5"           | 20.5"           | 22.5"           | 21"   | 22"   | 20"                           | 22"                           | 21.5"   | 22"   | 21"   | 20"   |
| 20"             | 22"             | 23.5"           | 21"   | 22"   | 20"                           | 23"                           | 22"   | 23"   | 21"   | 21"   |
| 25"             | 27"             | 30"             | 27"   | 29"   | 26"                           | 29"                           | 25"   | 26"   | 26.5"   | 25"   |
| Yes             | Yes             | Yes             | Yes   | Yes   | Yes                           | Yes                           | Yes   | Yes   | Yes   | Yes   |
| Standard        | Standard        | Standard        | Standard  | Standard  | Standard                      | Standard                      | Standard  | Standard  | Standard  | Standard  |
| NA              | NA              | NA              | NA  | NA  | NA                            | NA                            | NA  | NA  | NA  | NA  |
| NA              | NA              | NA              | NA  | NA  | NA                            | NA                            | NA  | NA  | NA  | NA  |
| Total Comfort   | Total Comfort   | Total Comfort   | Total Comfort   | Total Comfort   | Pocketed<br>Coil Springs      | Pocketed<br>Coil Springs      | Total Comfort   | Total Comfort   | Total Comfort   | Total Comfort   |
| 40"             | 42"             | 47"             | 42"   | 43"   | 44.5"                         | 47"                           | 42"   | 43.5"   | 41"   | 42"   |
| 13"             | 16"             | 16"             | 14"   | 16"   | 18"                           | 21"                           | 16"   | 16"   | 14"   | 14"   |
| 33.75"          | 37.5"           | 38"             | 35.5"   | 37.5"   | 33"                           | 36.5"                         | 35"   | 36.5"   | 33"   | 33"   |
| 137 lbs.        | 145 lbs.        | 155 lbs.        | 152 lbs.  | 157 lbs.  | 148 lbs.                      | 150 lbs.                      | 153 lbs.  | 160 lbs.  | 142 lbs.  | 145 lbs.  |
| 7-Yr. Pro-rated | 7-Yr. Pro-rated | 7-Yr. Pro-rated | 7-Yr. Pro-rated   | 7-Yr. Pro-rated   | 7-Yr. Pro-rated               | 7-Yr. Pro-rated               | 7-Yr. Pro-rated   | 7-Yr. Pro-rated   | 7-Yr. Pro-rated   | 7-Yr. Pro-rated   |

1. Vivalift!® Power Recliners are FDA Class II Medical Devices designed to aid individuals with mobility impairments.

2. The wireless charger is only compatible with smart phones that have wireless charging capabilities. Additionally, no other smart devices, (i.e. smart watches) should be used with the wireless charger.

3. Height ranges should be used as a guide only due to varying factors of each individual user.

4. Unit has three different heating pads in the shoulders, lumbar and seat.

*Viva*LIFT!®  
POWER RECLINER COLLECTION¹

(US) 800-800-8586 | (CAN) 888-570-1113 | [pridemobility.com](http://pridemobility.com) |    

