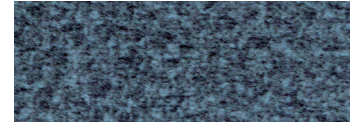




Shown in Brisa Night Navy*

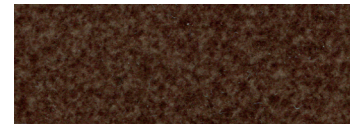
Standard Fabrics:



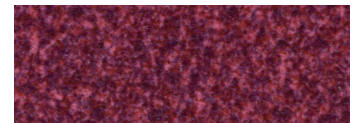
Calypso (TCP)



Camel (TCM)



Hazelnut (THA)



Shiraz (TSZ)



Sterling (TST)

This fabric has a modern, updated look with rich color options. It features our exclusive SofTouch™ with Stain Defense coating.

* An upcharge will apply for all crossover fabrics.

Regal PR504



Comfort Zone[™]
by GOLDEN

Relax and recharge in comfort and style with the PR504 Regal Power Lift Recliner. The Regal is medium/large size with a higher back to comfortably accommodate taller people. It features a stylish top load, open-arm design with a plush seamed back, and posture-encouraging bucket seat to conform to your body allowing you to unwind from your busy day. Positioning options are endless with our 4-Zone Comfort Zone™ positioning system, which offers four adjustable positioning zones: footrest, backrest, headrest, and lumbar all operated by our programmable AutoDrive™ hand control. The right arm compartments feature a special no-spill cup holder that keeps beverages upright while moving into or out of the lifted position and storage for the AutoDrive hand control. The left arm compartments feature a wireless smartphone charger, removable table, an additional USB charging port and hold the HeatWave™ hand control. As a bonus, you can use the cup holder and table without losing the comfort of the armrests thanks to the split design!

Standard Features:

- Patented MaxiComfort® Positioning
- Adjustable Headrest
- Adjustable Lumbar
- Programmable AutoDrive™ Hand Control
- Removable Table
- Wireless Smartphone Charger
- USB Charging Port
- No-Spill Cup Holder
- Extra Pocket
- HeatWave™ Technology



MAXICOMFORT® Series PR504



| | |
|--|--------------------------|
| Model Number | PR504-MLA-ST4 |
| Size | MLA |
| Class II Medical Device | YES |
| Weight Capacity | 400 LBS |
| Positioning | Infinite |
| Comfort Zone(s) | 4 |
| Twilight Technology | NO |
| ZG+ Position | NO |
| Chaise Seat | YES |
| Pocketed Coil Seat | NO |
| Back Type | Seam |
| Removable Back Type | Bracket |
| Head Rest Cover | NO |
| Arm Rest Covers | NO |
| Overall Width | 40" |
| Overall Height | 48" |
| Width Between Arms | 23" |
| Floor to Top of Seat | 20.5" |
| Seat Depth | 22.5" |
| Seat to Top of Back | 33" |
| Seat to Top of Arm | 7.5" |
| Distance Required from Wall Reclined | 22" |
| Extension Reclined from Back of Seat to End of Foot Rest | 42.5" |
| Life Time Warranty, Chair Frame, Lift Frame, Recline Mechanism | YES |
| Warranty on Electrical Parts | 3 YR |
| Pro Rated Years 4 Thru 7 | YES |
| Warranty on Mechanical Labor | 3 YR |
| Warranty on Electrical Labor | 1 YR |
| Hand Control Routing | Right Arm Compartment |
| Extra Pocket Option | Standard |
| HeatWave Technology | Standard |
| Heat & Vibrating Massage Option | YES |
| Articulating Headrest Option | Standard |
| Adjustable Lumbar Option | Standard |
| Foot Rest Extension Option | YES |
| Straight Lift Option | YES |
| USB Charging Port | Left Arm Compartment |
| Battery Backup | Lithium-Ion |
| SmartTek® Diagnostic System | Standard |
| Place of Origin | USA |

The Regal comes standard with the following comfort and convenience features:



Adjustable Headrest & Lumbar



Storage Compartment on Right & Left Sides



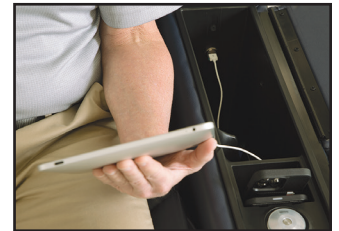
Removable Table



No-Spill Cup Holder



Wireless Smartphone Charger



USB Charging Port

SmartTek® Diagnostic System STANDARD on all Golden models.
All Golden lift chairs are Class II Medical Devices.



Comfort Zone
by GOLDEN

Comfort Zones 1 - 4 provide an ergonomic comfort experience with an emphasis on head and back support. Each Comfort Zone can be adjusted independently by using the exclusive AutoDrive hand control.



WE PATENTED COMFORT™



Scan with your smartphone camera to learn more about Comfort Zone by Golden.



Phone: 800-624-6374
Fax: 800-628-5165
www.goldentech.com

Literature is current at time of printing. Golden Technologies reserves the right to make changes to the product or literature at any time.

Sizes may vary depending on fabric, filling material, upholstery and carpet thickness. All measurements taken on concrete floor using levels and metal rulers.



Complies with
UL 73 and
CSA C22.2 No. 68



Find us on Facebook
www.facebook.com/goldentechnologies

SHT-PR504-060123