



WHILL Model C2: Airline Handling Guide

For proper airport personnel handling of WHILL Model C2 personal mobility device.
Attach this document to device in a conspicuous area.

Owner's Contact Information:

Name: _____

Phone: _____

Device Serial #: _____

Height
28.7"
Maximum height of controller position = highest point of device with back support folded down.

Weight
114 lb



Length
38.8"

Width
21.5"-25.5"



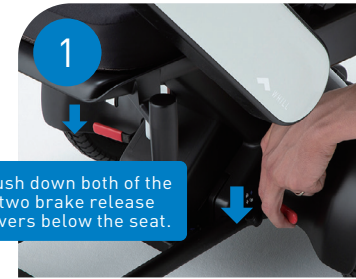
Battery

Type: Rechargeable Lithium-ion

Specs: 25.3 V; 269 Wh

Other: Removable from device.

Requires removal and storage in cabin for airline travel.



1
Push down both of the two brake release levers below the seat.

Freewheel Mode

Disengage brakes by pushing down the two red brake levers on the bottom of the device. Fold back support down.



2

Lifting Device

Only lift the device using the anti-tip bars on the back and handle on front of footplate



3
Raise both brake release levers to re-engage the brakes.

Engage Brakes

When the Model C2 reaches the cargo area, load device in upright position, then lock the brakes by lifting the two red levers up. This will prevent the device from shifting in-flight.

At destination, safely return the device to the owner at the gate by following steps 1 and 2 in reverse order.

WHILL rechargeable lithium-ion battery has been tested on UN Manual of Tests and Criteria Part 3 Subsection 38.3 and certified to meet the applicable ICAO, IATA and FAA requirements. However, WHILL Model C2 personal mobility device has not been specifically tested for air transport.